

Coagulation transportation system

CN track

Stay on track with
high-volume workloads





High productivity and flexibility help you optimise your haemostasis workflow

With decades of experience in haematology and urinalysis workflow automation and thousands of satisfied customers, you can rely on Sysmex automation solutions for the haemostasis work area.



Automate your haemostasis work area by connecting up to three CN-Series or CS-5100 analysers to a track system.



The modular and scalable configuration set-up allows adaptation to your workflow needs and is space-saving.



Smartly streamline your haemostasis workflow with a single point of sample feeding/collection and a focus on short turnaround times.



Intelligent data management with our software solutions *Extended IPU* and *Caresphere™*



Our cost-effective island solution requires only a moderate investment.



CN track can be connected to different TLA systems. Additionally, the CN track can be smartly combined with the Sysmex haematology track as a *BloodScience* solution – to support physicians in obtaining a more holistic picture of their patients and to improve the workflow in the laboratory.

Tailoring your haemostasis

Our modular haemostasis automation concept allows configuring the solution that fits best to your lab and adapts to your workflow needs. It will maintain its good fit and safeguard your investment thanks to its scalability.

Mix and match

With a choice of different analyser models and a variety of automation components, compact configurations can be flexibly built, based on your individual requirements. Whichever set-up you decide on, it will always be intelligently controlled by our software components.



Sample feeding and collection points are located on the right side, with a re-run module located on the left side of the track.

Shorten turnaround times and reduce hands-on time with the optional re-run module.

Switch an analyser to stand-alone mode without interrupting the workflow.

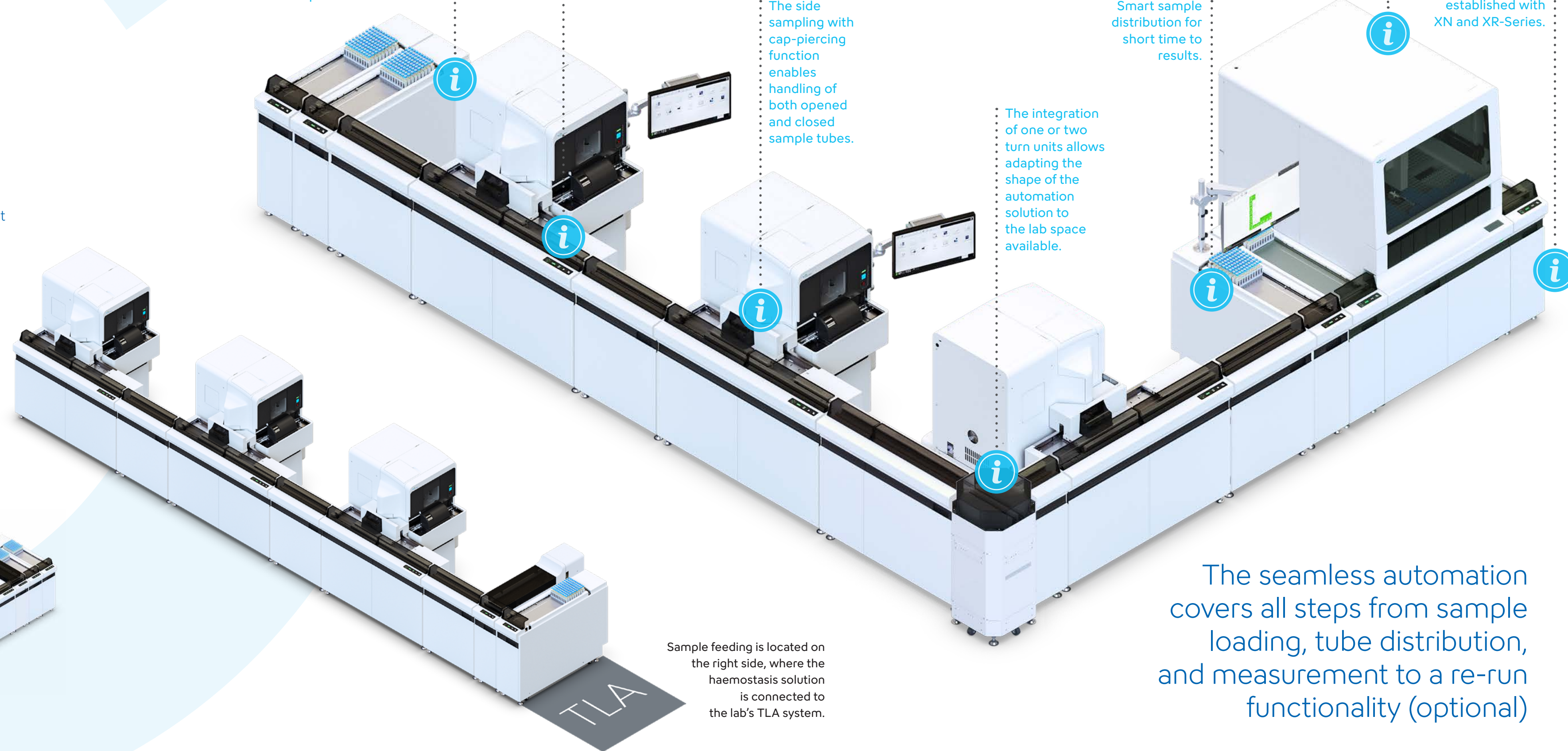
The side sampling with cap-piercing function enables handling of both opened and closed sample tubes.

The integration of one or two turn units allows adapting the shape of the automation solution to the lab space available.

Smart sample distribution for short time to results.

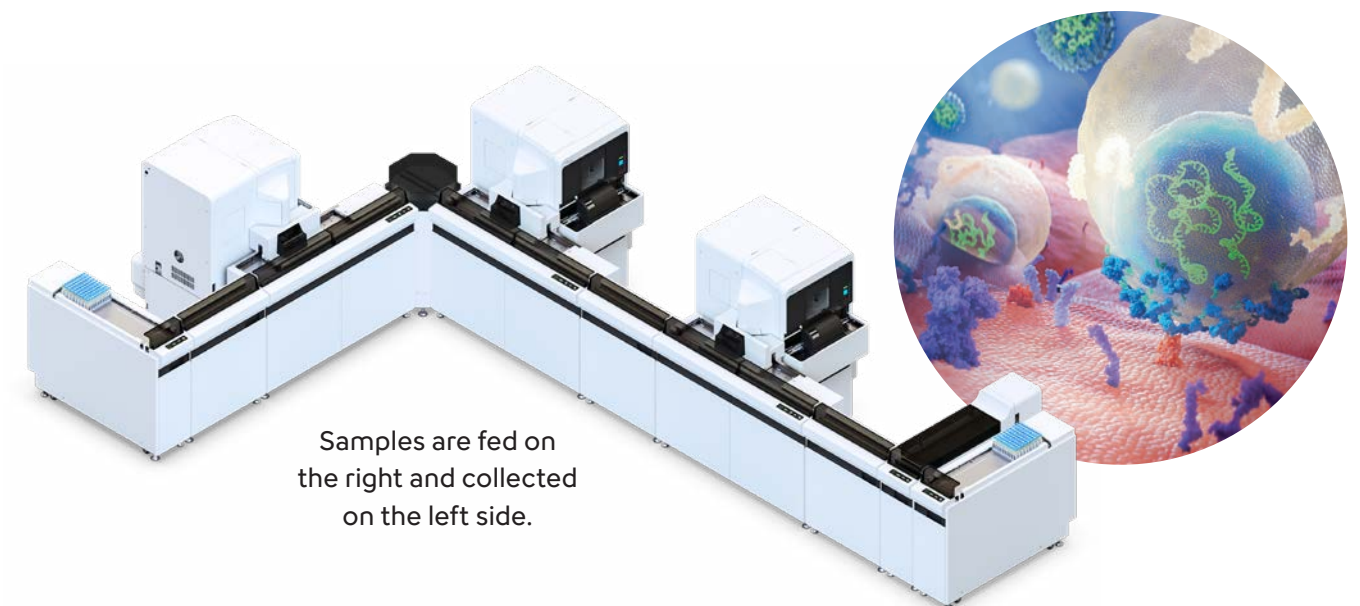
The TS-10 module: Automatic sample identification, sample pre-sorting, archiving and post-sorting.

CN track uses proven automation components established with XN and XR-Series.

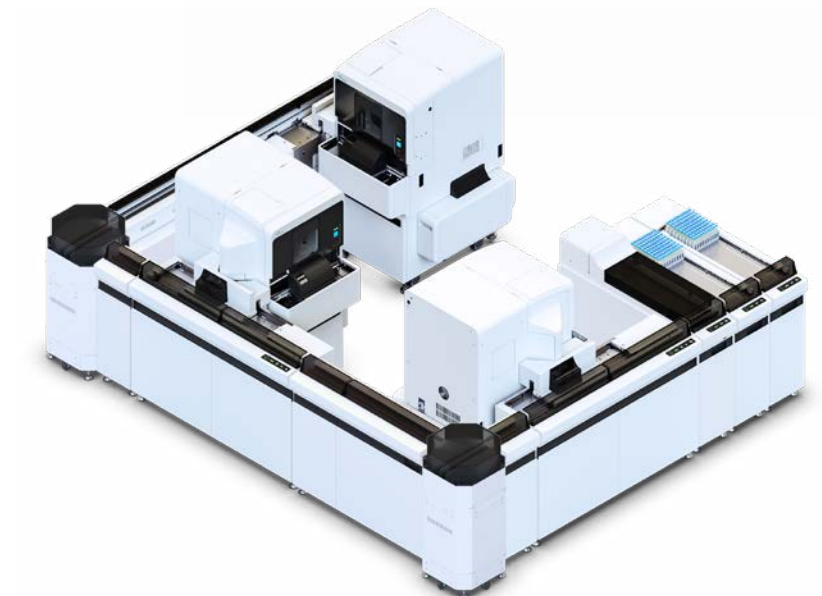


Sample feeding is located on the right side, where the haemostasis solution is connected to the lab's TLA system.

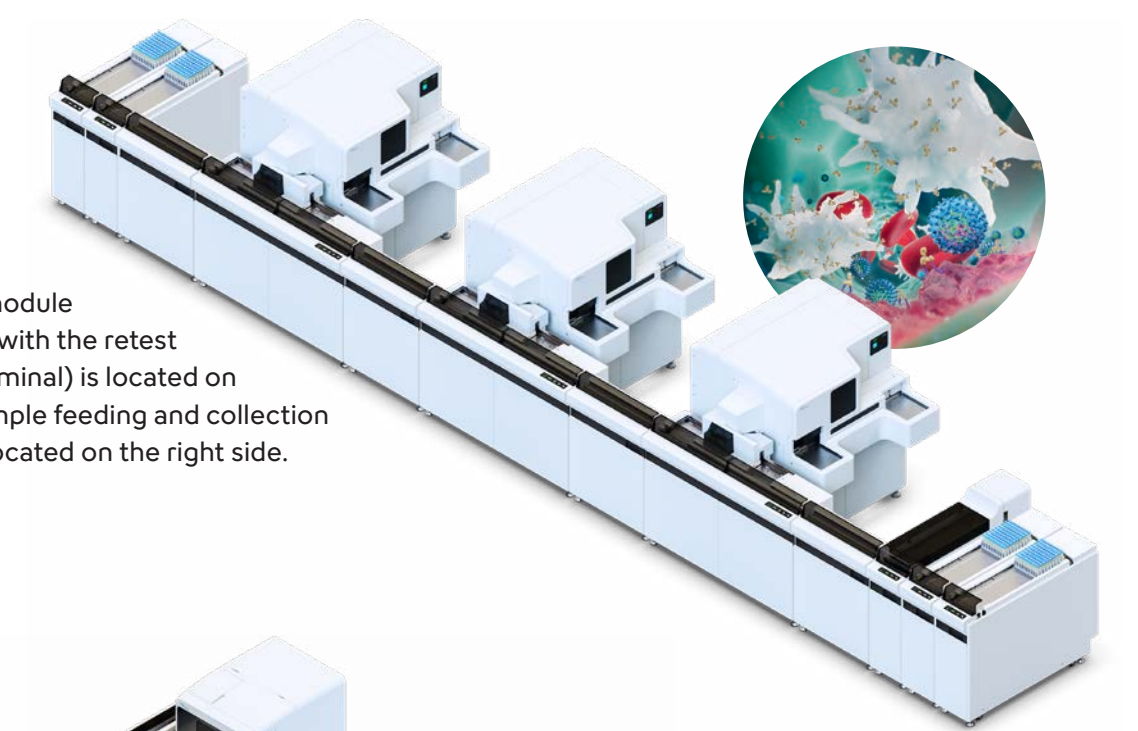
The seamless automation covers all steps from sample loading, tube distribution, and measurement to a re-run functionality (optional)



Samples are fed on the right and collected on the left side.

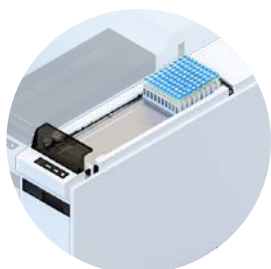


Sample feeding and collection points are located on the right side.



The rerun module (buffer unit with the retest barcode terminal) is located on the left. Sample feeding and collection points are located on the right side.

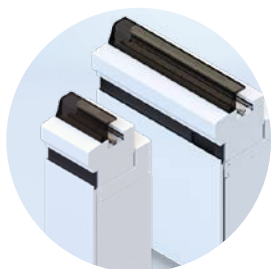
Key automation components



The start, stock, and transfer modules are the sample feeding and collection points of your automation solution. It is possible to extend the feeding and collection area by connecting up to four of these units each to meet your workload needs.



The transportation controller for haemostasis – together with the barcode terminal and the optional rerun module – takes care of the sample distribution in an intelligent way. Samples can be directed according to assay profiles, taking re-run criteria into account, or finding the fastest way across the track with the first available analyser. The transportation controller also displays the position of any rack on the track and indicates any sample barcode error, allowing you to keep track of all your samples at any time.



You can choose between two types of extension conveyor elements: a narrow (270 mm width) and a wider (650 mm width) one. When size matters, the narrow conveyor can be placed between analysers – this will optimise the space consumption. The wider conveyor extends the space between analysers. Use it to fit your automation line to your lab environment, for example to bypass a pillar.



With the help of the turn unit, your automation line can be taken around an inner or an outer corner, forming either a compact or a more spacious L shape configuration. When using three analysers with two turn units, the track can be set up to form a U or a Z shape.



The configuration with an optional tube sorter is best suited to labs with a need to manage pre-sorting, sorting and archiving functionalities based on sample profile. With a single entry, this configuration allows you to manage automatic sample entry registration, rack optimisation by pre-sorting tubes based on the order profile, sample archiving and sample post-sorting for samples with outstanding analysis orders. Sorting priorities are customisable with *Extended IPU*, bringing tailor made sample management automation to your lab workflow.

Distributor EMEA: Sysmex Europe SE · www.sysmex-europe.com

Manufacturer *Extended IPU*: Sysmex Europe SE · www.sysmex-europe.com

Manufacturer: Sysmex Corporation · www.sysmex.co.jp

You will find your local Sysmex representative's address under www.sysmex-europe.com/contacts

www.sysmex-europe.com/cn