

Fully automated haemostasis analysers

# CN-3000/CN-6000

**Power up your haemostasis lab**



# Power in a new dimension

Your investment today holds the power to satisfy tomorrow's needs.



## Powerful productivity

Less space needed, more possibilities gained: CN-Series' ergonomic design paired with its ultra-high throughput leads to unmatched productivity per square metre, complemented by a wide assay portfolio to give you the utmost room for growth.



## Operational power

Bring ease of use to a new level with CN-Series. The systems actively support the user for a daily routine experience that is as smooth as possible, and minimise the need of hands-on time.



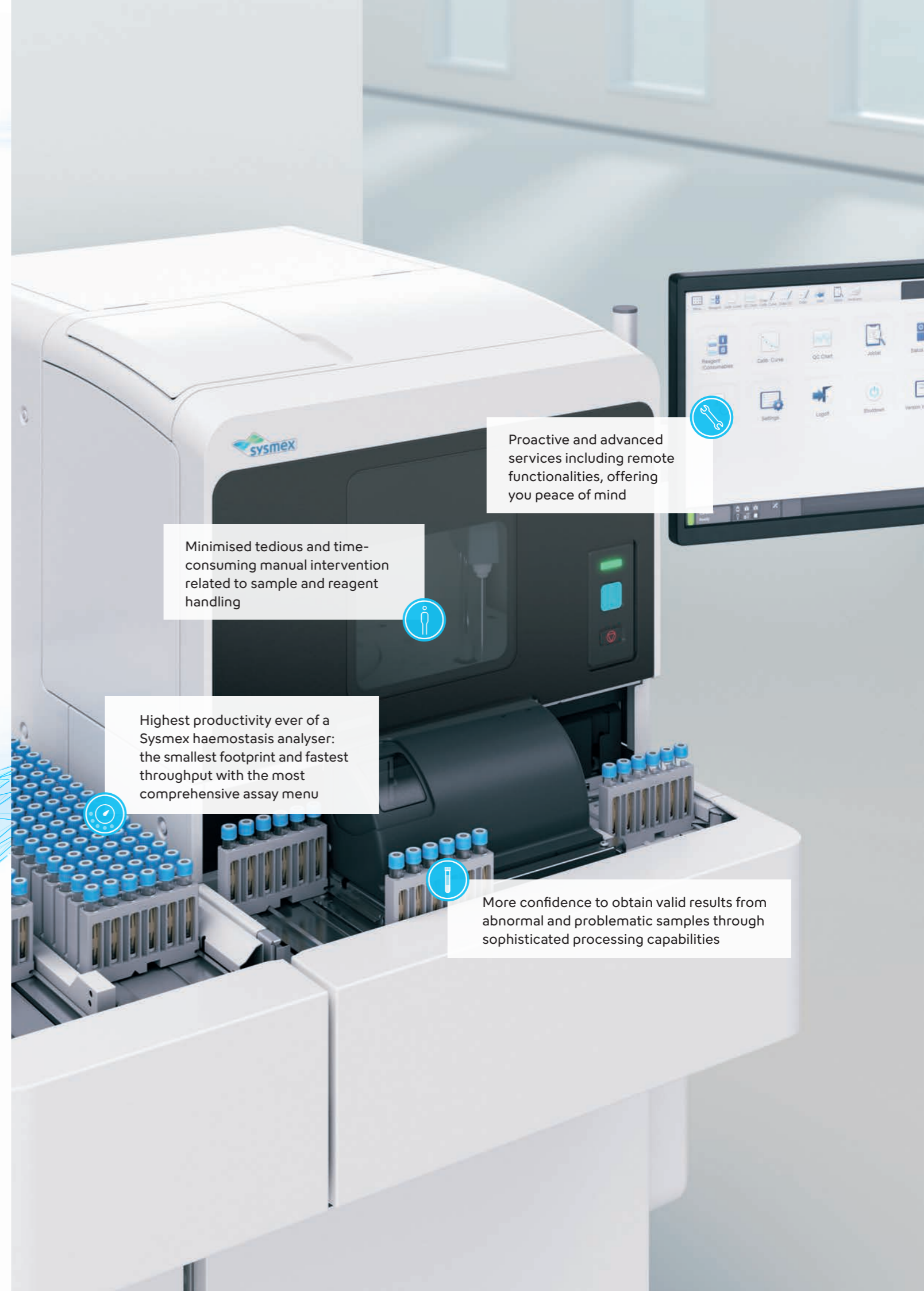
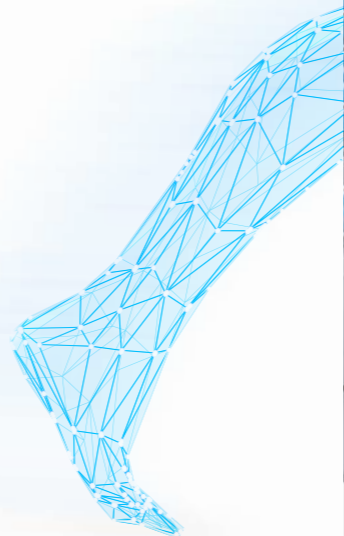
## Analytical power

Make decisions confidently based on your results. Even from difficult samples, CN-Series provides you reliable results straight away, thanks to its powerful technologies and processing capabilities.



## Powerful services

Choosing Sysmex as a partner in your lab sets new standards for your peace of mind. Maximise your analyser uptime and performance quality with the advanced services Sysmex and CN-Series offer.



Proactive and advanced services including remote functionalities, offering you peace of mind

Minimised tedious and time-consuming manual intervention related to sample and reagent handling

Highest productivity ever of a Sysmex haemostasis analyser: the smallest footprint and fastest throughput with the most comprehensive assay menu

More confidence to obtain valid results from abnormal and problematic samples through sophisticated processing capabilities

# Power in a new dimension

Your investment today holds the power to satisfy tomorrow's needs.



## Powerful productivity

Less space needed, more possibilities gained: CN-Series' ergonomic design paired with its ultra-high throughput leads to unmatched productivity per square metre, complemented by a wide assay portfolio to give you the utmost room for growth.



## Operational power

Bring ease of use to a new level with CN-Series. The systems actively support the user for a daily routine experience that is as smooth as possible, and minimise the need of hands-on time.



## Analytical power

Make decisions confidently based on your results. Even from difficult samples, CN-Series provides you reliable results straight away, thanks to its powerful technologies and processing capabilities.



## Powerful services

Choosing Sysmex as a partner in your lab sets new standards for your peace of mind. Maximise your analyser uptime and performance quality with the advanced services Sysmex and CN-Series offer.



## Wondering how to cope if test numbers keep rising?

- Expand your CN solution flexibly by connecting up to three analysers to a track system handling up to 1,000 tubes/h.
- The cap-piercing functionality enables closed tube side sampling from multiple tube types.
- Manage your haemostasis workflow intelligently with our software solution Caresphere™.
- Our automated island solution has the advantage of not needing heavy investments while being cost-effective, space-saving, and adaptable to your haemostasis work area's workflow.

With decades of experience in haematology and urinalysis workflow automation and thousands of satisfied customers, you can trust in Sysmex automation solutions for the haemostasis work area.

## Time is money?

- Shorten your turnaround times with CN's high throughput of up to 450 tests/h.
- Use one system for routine and specialty assays – CN offers you the opportunity, including e.g. platelet aggregation and DOAC assays.
- Save lab space without compromising on speed. CN does not need to be big to be powerful.
- Get more analyses out of less volume: CN requires only a minimal sample dead volume.



# Power in a new dimension

Your investment today holds the power to satisfy tomorrow's needs.



## Powerful productivity

Less space needed, more possibilities gained: CN-Series' ergonomic design paired with its ultra-high throughput leads to unmatched productivity per square metre, complemented by a wide assay portfolio to give you the utmost room for growth.



## Operational power

Bring ease of use to a new level with CN-Series. The systems actively support the user for a daily routine experience that is as smooth as possible, and minimise the need of hands-on time.



## Analytical power

Make decisions confidently based on your results. Even from difficult samples, CN-Series provides you reliable results straight away, thanks to its powerful technologies and processing capabilities.



## Powerful services

Choosing Sysmex as a partner in your lab sets new standards for your peace of mind. Maximise your analyser uptime and performance quality with the advanced services Sysmex and CN-Series offer.

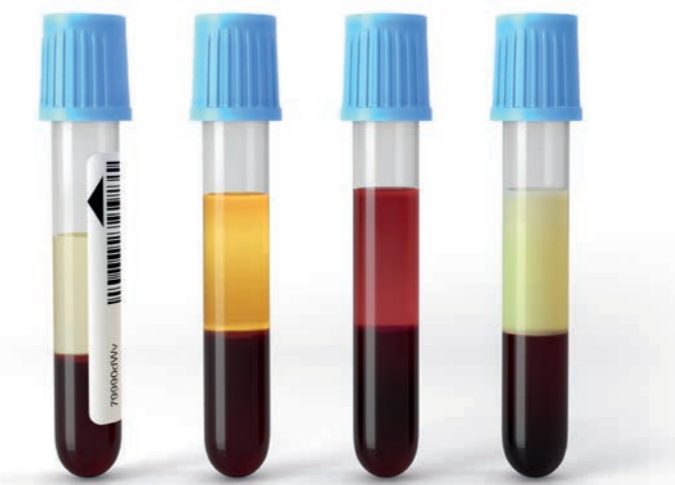


## Time is money?

- Shorten your turnaround times with CN's high throughput of up to 450 tests/h.
- Use one system for routine and specialty assays – CN offers you the opportunity, including e.g. platelet aggregation and DOAC assays.
- Save lab space without compromising on speed. CN does not need to be big to be powerful.
- Get more analyses out of less volume: CN requires only a minimal sample dead volume.

## Difficult or critical sample?

- Not all samples coming to the lab are perfect. CN identifies sub-optimal samples with its HIL and sample volume checks.
- With its proven multi-wavelength technology for clotting, chromogenic, platelet aggregation and immunoassays, CN analyses samples reliably, even with demanding assay profiles.
- Assess comprehensive coagulation functions through CN's clot waveform analysis (CWA).
- CN makes inhibitor testing more convenient, thanks to its on-board cross-mixing functions.

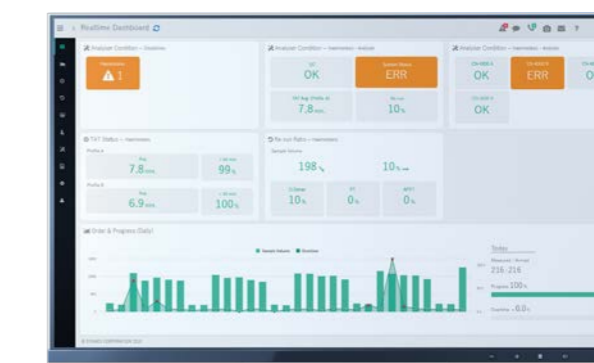


## Another busy working day ahead?



- CN is here to help: the system tells you up front how many vials of which reagent it needs to run the planned daily routine without interruption.
- Spare yourself manual dilutions of platelet aggregation agonists with CN's automatic dilution function.
- You can connect your CN directly to your water purification system so you do not have to carry rinse water tanks around.
- Run up to 120,000 samples without changing the piercer.
- LED light sources with true longevity of up to five years – and without user maintenance.

## Tired of preventable downtime?



- CN proactively helps preventing sudden downtime by technical self-check functions allowing real-time diagnosis.
- Together with Sysmex's remote support capabilities, CN downtime can be minimised and made to fit in better with the lab's schedule.
- Should trouble-shooting become necessary, CN's interactive guide leads the operator easily through the necessary actions and countermeasures.

With over 50 years' experience and a global presence in more than 190 countries, Sysmex provides high-quality products, service and support to healthcare professionals in the field of *in vitro* diagnostics around the world.



## Key specifications

Models	CN-3000, CN-6000
Principles/technologies	clotting, chromogenic, latex IA, aggregation
Throughput	CN-3000: PT: 225 tests/h; PT/APTT: 215 tests/h CN-6000: PT: 450 tests/h; PT/APTT: 401 tests/h
Analysis methods	dilution measurement, multi-dilution (MDA), cross-mixing, automated measurement (repeat, re-dilution, reflex), clot waveform analysis (CWA)*
Light source	LED (36,000 h) with multi-wavelength capability (340 nm, 405 nm, 575 nm, 660 nm, 800 nm)
Pre-analytical checks	HIL check (assay-based), sample volume check
Loading capacity	30 tubes with standard sampler; continuous loading 120 tubes with sampler module**; continuous loading
STAT position	1 position with cap-piercing (micro mode is not available)
STAT TAT	PT: 4.5 min
Reagent positions	38 positions
Buffer positions	6 positions (room temperature)
Storage temperature	4–12°C in the reagent cooling unit (ambient temperature 15–28°C)
Traceability	available via lot#, cal#, operator ID, QC result, operation log, etc.
QC method	Xbar, L-J
QC record	up to 120 QC files with 1,200 points/file import previous QC data into QC graph and save it
Automated QC	time span, scheduling (e.g. 9:00, 12:00, ...), switch to new vial, test#, specified vial QC (selectable)
Interlaboratory comparison	Caresphere™ XQC
Display monitor	23 inch touch screen
LAS connection	available, including CP side sampling
Power supply	main unit: AC 100–240 V / 1080 VA or less pneumatic unit: 100–240 V / 250 VA or less
Dimensions/weight	595 × 1,350 × 906 / 230 (PU-17 is included, w/o PC/monitor) 720 mm including cuvette waste box with optional sampler/wagon and cuvette waste box: 1,060 × 1,350 × 1,030 mm

\* research use only | \*\* optional

Distributor EMEA: Sysmex Europe SE · [www.sysmex-europe.com](http://www.sysmex-europe.com)  
Manufacturer: Sysmex Corporation · [www.sysmex.co.jp](http://www.sysmex.co.jp)  
You will find your local Sysmex representative's address under [www.sysmex-europe.com/contacts](http://www.sysmex-europe.com/contacts)

[www.sysmex-europe.com/cn](http://www.sysmex-europe.com/cn)